

Care Providers — Hospitals

Enterprise Image and Information Management

McKesson Enterprise Image Repository System Dashboard™

Simplify system administration with at-a-glance view

Your PACS administrators have their hands full monitoring and evaluating system status. The list is endless: evaluating space remaining in cache and archive storage, the number of studies awaiting archival and the time period of exams available in online storage, monitoring network connectivity of servers, workstations, modalities and other devices, and on and on. What if you could ease the load and give your administrators more visibility and control?

With McKesson, you can. The McKesson Enterprise Image Repository System Dashboard™ application of the McKesson Enterprise Image Repository™ solution allows administrators to use a web-based interface

to simplify the task of system monitoring and more effectively perform their jobs. The ability to view system status “at a glance,” helps to promote proactive administration, increase user confidence and reduce overall problem resolution time for the better health of your network and, ultimately, better health of your patients.

Web-based monitoring

McKesson Enterprise Image Repository System Dashboard features four main system monitoring capabilities:

Connectivity and bandwidth

- Shows network health by displaying connectivity of servers to workstations, modalities and other external devices

Benefits

The dashboard helps organizations:

- Improve visibility and control of systems
- Increase user confidence
- Promote proactive monitoring of system components
- Reduce overall problem resolution time



**BUSINESS
CARE
CONNECTIVITY**

Features

The dashboard includes:

- Connectivity and bandwidth testing
- Cache storage capacity monitoring
- Archive storage capacity
- Process management for numerous systems

- Allows the administrator to run bandwidth tests between servers and workstations

Process and interface health (see figure 1)

- Displays status of all processes and interfaces
- Allows sorting of processes by server or process type
- Allows monitoring of processes across multiple system databases
- Provides an authorized system administrator the ability to stop and start system processes
- Provides the option to save log files for subsequent root-cause analysis, possibly involving McKesson support

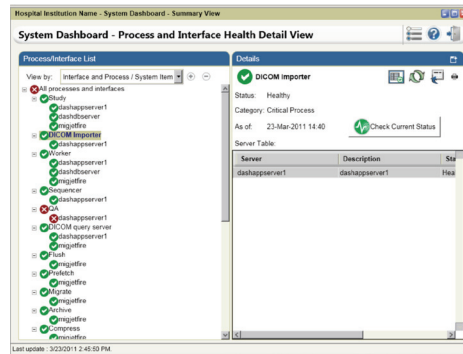


figure 1

Shows status information for all McKesson Enterprise Image Repository™ processes and interfaces.

- Shows current number of queue
- archive operations and a sortable list of failed jobs

Cache storage capacity (see figure 2)

- Displays total and free space in primary and secondary cache storage pools
- Provides a snapshot view of current storage, showing study volume or size broken down by:
 - Study date
 - Online or offline
 - Archived or not archived
 - Retrieved from archive by system or user request
- Enables you to choose displayed time scales and storage partitions

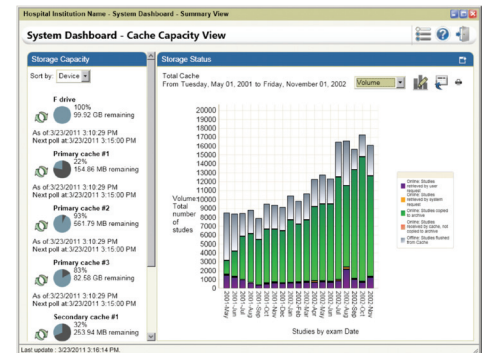


figure 2

Use a customizable display of cache storage capacity for analysis of usage patterns.

Archive storage capacity

- Displays total and free space for compatible connected archive devices
- Enables archive expansion budgeting

Contact us

For more information about McKesson Enterprise Image Repository System Dashboard, contact your sales representative or visit www.mckesson.com.

McKesson Technology Solutions

5995 Windward Parkway
Alpharetta, GA 30005

www.mckesson.com

Copyright © 2013 McKesson Corporation and/or one of its subsidiaries. All rights reserved. McKesson Enterprise Image Repository and McKesson Enterprise Image Repository System Dashboard are trademarks of McKesson Corporation and/or one of its subsidiaries. All other product or company names mentioned may be trademarks, service marks or registered trademarks of their respective companies.

IMG128-06/13



**BUSINESS
CARE
CONNECTIVITY**

MCKESSON